

Frese S Dynamic balancing valve

Why allocate more time and money than necessary balancing heating and cooling systems? The new Frese S dynamic balancing valve is simple to select and easy to commission.

Just set the flow and the Frese S valve will ensure quick and reliable commissioning.

- Max differential pressure: 400 kPa
- Temperature range: -10° to +120°C
- Dimensions: DN15-DN50
- Material: DZR brass
- Flow range up to 10,4 m³/h
- Static pressure: PN25
- For cooling and heating applications

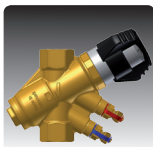
Once set, no adjustments are required even if the pressure varies or the system is changed. Simply check that the pump pressure at the index valve is correct and the job is done. It is as simple as it gets.

The Frese S valve is compact by design and requires less space for installation as reliable flow is maintained even when installed next to a pipe bend or fitting.

The clear scale on the lockable handle ensures that flow setting is simple and user

friendly whilst the integral P/T plugs allow verification of pressure.

Frese balances efficiently HVAC systems all around the world. From cooling systems in the Middle East to heating systems in Scandinavia, Frese's products transform state of the art technology into every day solutions.



Optional position



Female/female connection



Simple scale